

Netley 1

AURELA

♩ = 90

1 Sopranino

2 treble

3 tenor

4 tenor

3

1 Sopranino

2 treble

3 tenor

4 tenor

5

1 Sopranino

2 treble

3 tenor

4 tenor

7

1 Sopranino

2 treble

3 tenor

4 tenor

9

1 Sopranino

2 treble

3 tenor

4 tenor

11

1 Sopranino

2 treble

3 tenor

4 tenor

13

1 Sopranino

2 treble

3 tenor

4 tenor

15

1 Sopranino

2 treble

3 tenor

4 tenor

17

1 Sopranino

2 treble

3 tenor

4 tenor

19

1 Sopranino

2 treble

3 tenor

4 tenor

21

1 Sopranino

2 treble

3 tenor

4 tenor

23

1 Sopranino

2 treble

3 tenor

4 tenor

25

1 Sopranino

2 treble

3 tenor

4 tenor

27

1 Sopranino

2 treble

3 tenor

4 tenor

29

1 Sopranino

2 treble

3 tenor

4 tenor

31

1 Sopranino

2 treble

3 tenor

4 tenor

34

1 Sopranino

2 treble

3 tenor

4 tenor

37

1 Sopranino

2 treble

3 tenor

4 tenor

39

1 Sopranino

2 treble

3 tenor

4 tenor

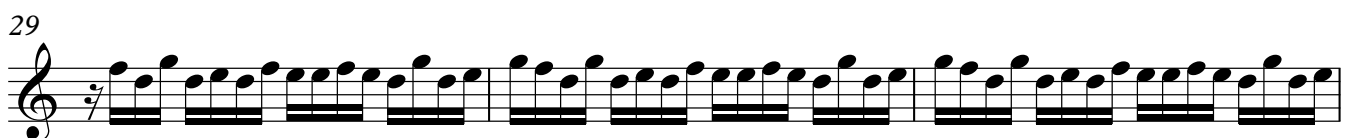
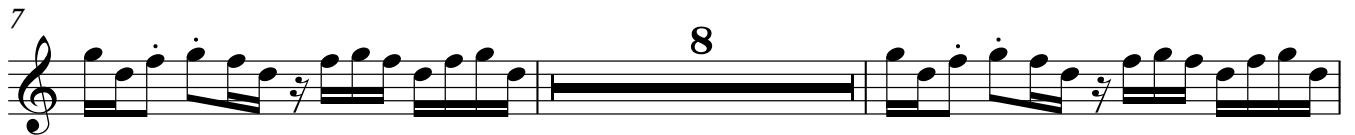
Detailed description of the musical score: The score consists of four staves. The first three staves (Sopranino, Treble, and Tenor) feature a melodic line starting on a half note in measure 39, followed by a sixteenth-note triplet, and ending with a quarter note in measure 40. The fourth staff (Tenor) has a lower melodic line, starting with a half note in measure 39 and a quarter note in measure 40. Fingerings are indicated as '5' for the first three staves and '5 5' for the third staff. A key signature of one flat is shown at the beginning of the first staff. The score concludes with a double bar line.

Netley 1

1 Sopranino

AURELA

♩ = 90

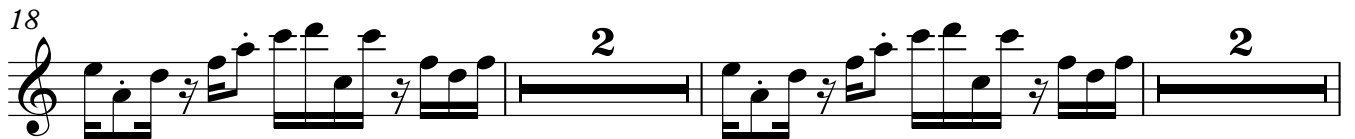


Netley 1

2 treble

AURELA

♩ = 90



Netley 1

3 tenor

AURELA

♩ = 90



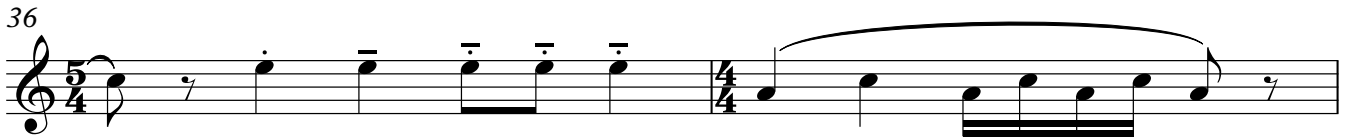
29



32



36



38

